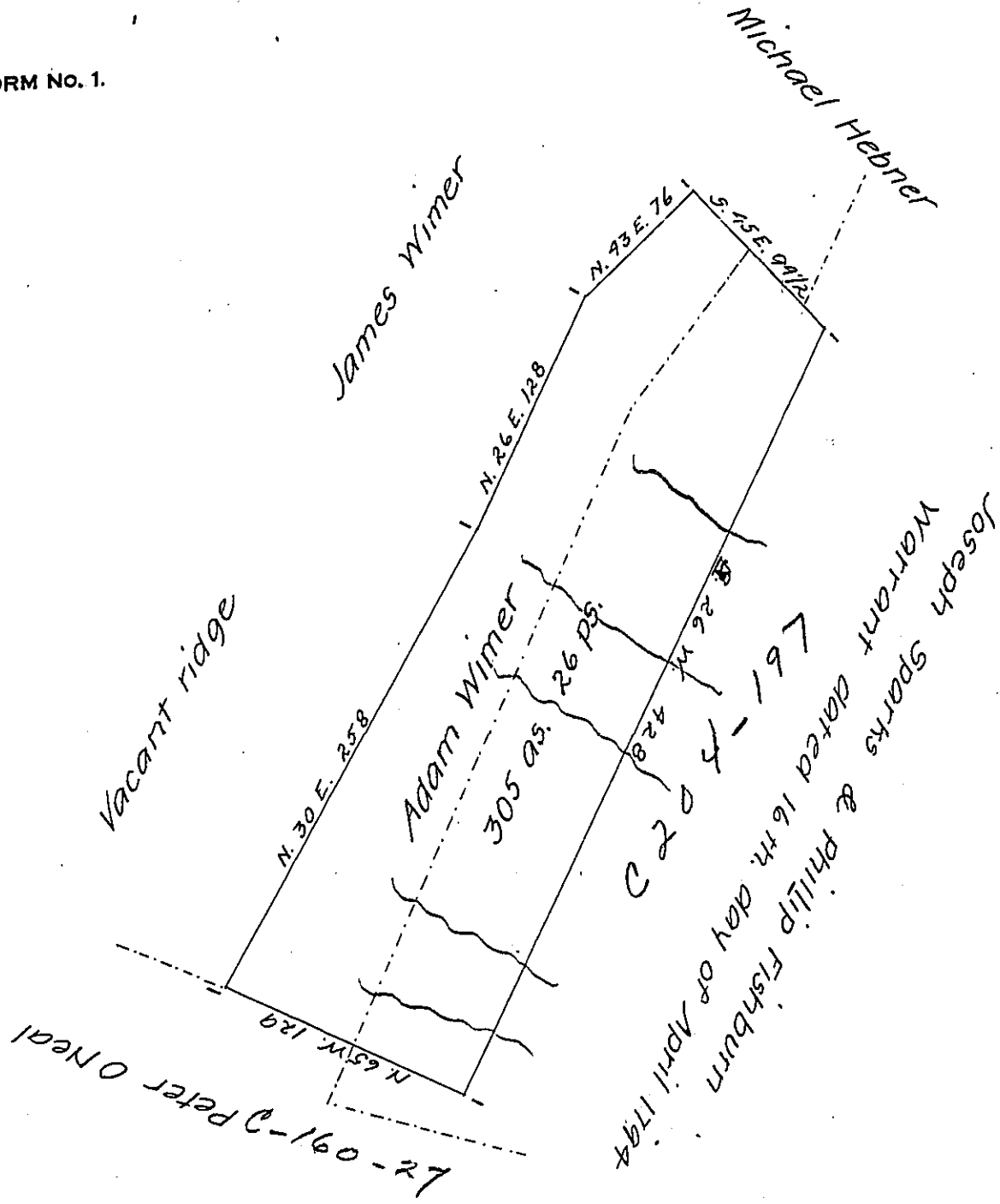


FORM NO. 1.



Situate on the waters of Brush Creek in Providence Township
 Bedford County containing 305 acres 26 perches and allowance surveyed
 the 9th day of June 1819 in pursuance of a Warrant for 300 acres
 dated the 20th day of June 1792.

James Piper D.S.

To Jacob Spangler Esqr.

Surveyor General

The dotted lines represent an interference with a survey in
 the name of Joseph Sparks & Phillip Fishburn.

J. Piper D.S.

IN TESTIMONY that the above is a copy of the original remaining on file in
 the Department of Internal Affairs of Pennsylvania, made
 conformably to an Act of Assembly approved the 16th day of
 February 1833, I have hereunto set my hand and caused
 the Seal of said Department to be affixed at Harrisburg,
 this twenty-third day of May 1907

Henry Houck
 Secretary of Internal Affairs.